



Operations Manual:

Vent Tube Detection System Hot Swap Procedure

REV 2-042417

1 Disconnect power from the unit by removing external User Connection.

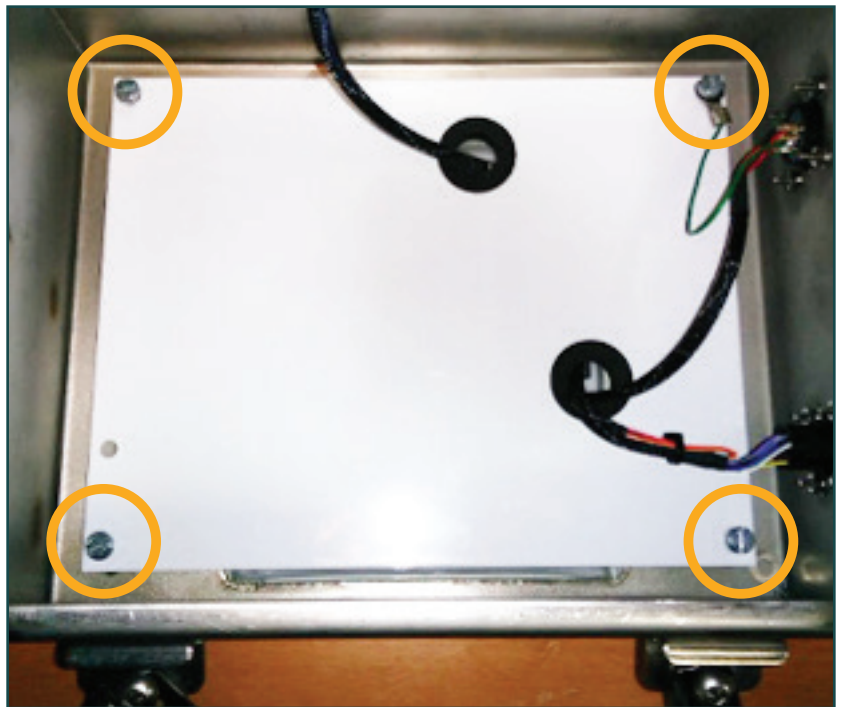
2 Begin by opening the SDA enclosure by loosening the two front screws. (fig 2)

3 Open the front cover.

4 Remove the four screws securing the protection plate. (fig 4)



2: Loosen front screws



4: Remove protection plate screws

5 Tilt the plate towards the external connectors in order access the circuit board connectors. (fig 5)

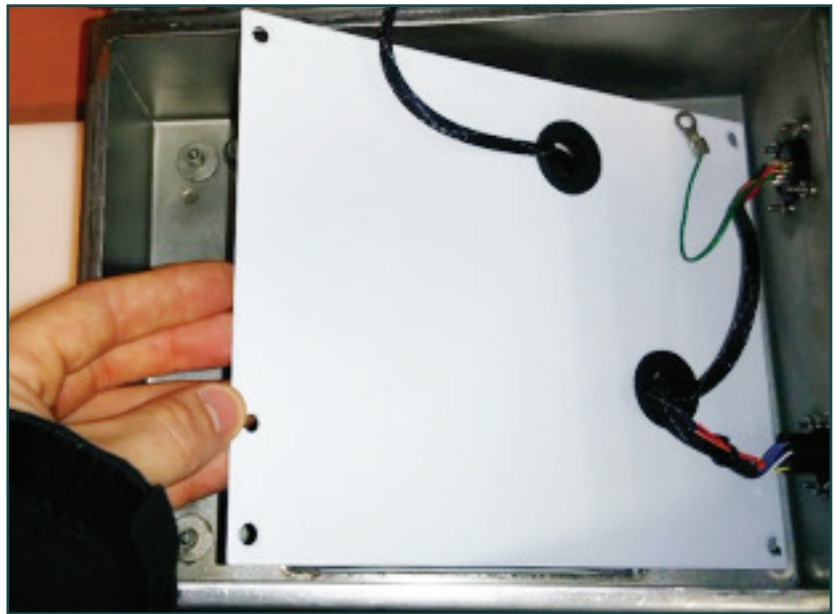
6 With a small flat head screw driver release the anti-vibration clips from that secure the harness to the connector. (fig 6)

- There are four connectors that need to be released and
- two vibration clips on each connector.

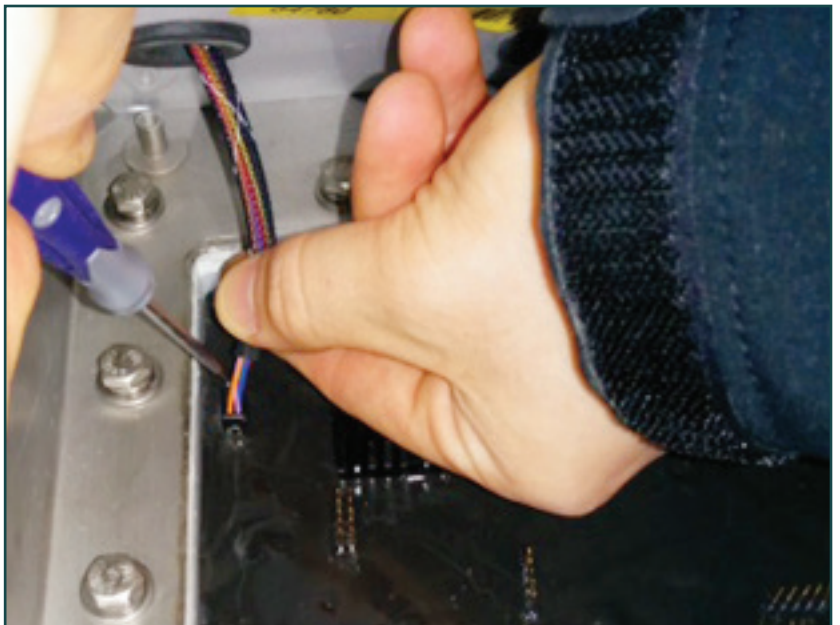
NOTE:

Be careful not to break the clips.

7 Remove Protection plate, exposing the encapsulated circuit board.



5: Lift plate to access circuit board



6: release the anti-vibration clips

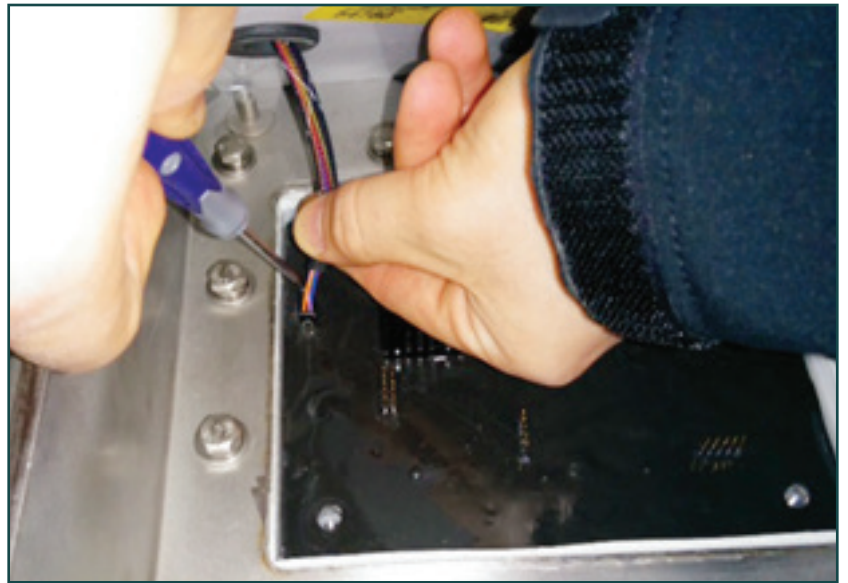
8 Remove the 4 screws securing the Encapsulated Circuit board to the SDA. (fig 8)

9 Remove the Encapsulated Circuit board and replace with the Hot Swap PCB.



8: Remove screws securing the Circuit board

10 Apply all connections ensuring the keyed header is placed correctly in the harness. (fig 10)

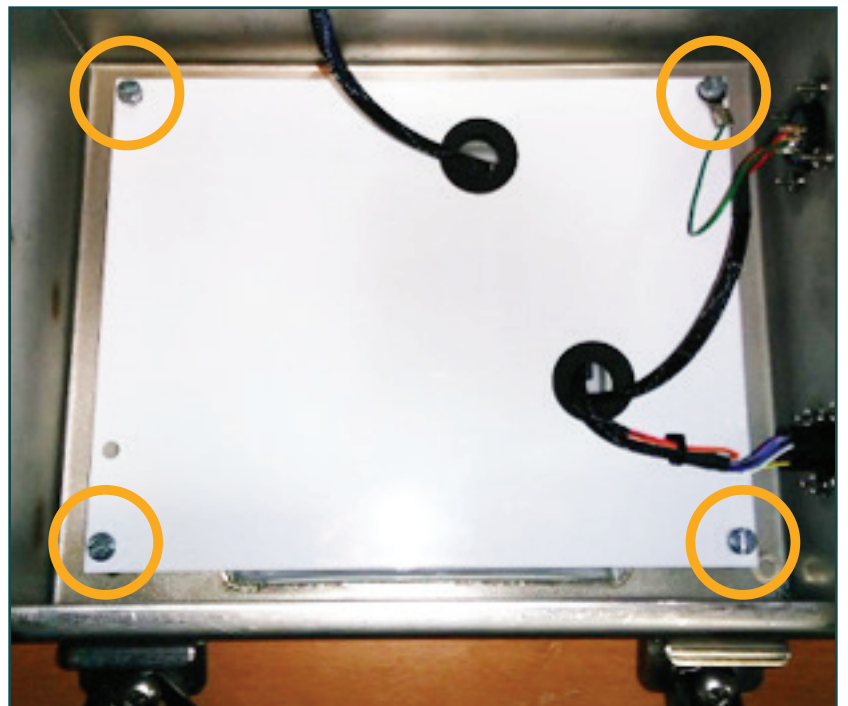


10: Apply all connections

11 Secure Protection Plate. (fig 11)

12 Close cover and secure with screws.

13 Connect the end of the cable with the pre-attached cord grip and interconnect to the appropriate user connection on the SDA's. Once power is connected to the unit the lights on the VTDS will flash briefly while the system initializes. A steady green light indicates that the system is ready for operation. Please see the VTDS Installation and Operation Manual for further details.



11: Secure protection plate

Please contact Dorcia with any questions.

Specifications and information herein are subject to change without notice.

©Dorcía, LLC. All Rights Reserved // REV v2-042417

